



# **SAILING INSTRUCTIONS** **(Amendment 1)**

**2025**

## **JJ GILTINAN** **18 FOOT SKIFF** **CHAMPIONSHIP**

*Organising Authority:*

*The Australian 18 Footers League*

## **1 RISK STATEMENT**

- 1.1 Boats shall refer to Notice of Race clause 14 regarding risk.

## **2 CHANGES TO SAILING INSTRUCTIONS**

- 2.1 Any change to the sailing instructions (SI) will be posted not less than two hours prior to the scheduled start time on the day it will take effect, except that any change to the schedule of races will be posted by 20:00 hours on the day before it will take effect.
- 2.2 On Water Changes to SI's - If code flag L is hoisted with a sound signal a change to the SIs will be broadcast.

## **3 SIGNALS MADE ASHORE**

- 3.1 Signals made ashore will be displayed on the flag mast of the Double Bay Sailing Club.
- 3.2 When flag AP is displayed ashore, "1 minute" is replaced with "not less than 30 minutes", in Race Signals AP.

## **4 RIGGING AREA**

- 4.1 Boats racing that day shall be fully rigged and standing in a vertical position 45 minutes prior to the first scheduled start time that day.
- 4.2 Boats shall launch from the rigging area between 45 minutes and 20 minutes prior to the first scheduled start time that day.
- 4.3 Infringement of this SI 4 cannot be protested by a boat. This changes RRS 60.1.

## **5 THE START**

- 5.1 The starting line will be between the mast of the Committee Vessel displaying a white rectangular flag with the Australian 18 Footers League logo, at the starboard end of the line and the mast displaying a white rectangular flag with the Australian 18 Footers League logo mounted on a white and black chequered inflatable buoy OR Marksetbot at the port end of the line.

## **6 THE FINISH**

### **6.1 Upwind Finish**

The finish line will be between the mast of the Committee Vessel displaying a white rectangular flag with the Australian 18 Footers logo at the starboard end of the line and the mast displaying a white rectangular Australian 18 Footers logo mounted on a white and black chequered inflatable buoy at the port end of the line.

### **6.2 Downwind Finish**

The finish line will be between the mast of the Committee Vessel displaying a white rectangular flag with the Australian 18 Footers logo at the port end of the line and the mast displaying a white rectangular flag with the Australian 18 Footers logo mounted on a white and black chequered inflatable buoy at the starboard end of the line.

**7 SIGNING ON AND OFF**

- 7.1 It is mandatory for ALL skippers to SIGN ON each race day at least 1 hour before the scheduled race start. The SIGN ON will be available in the Double Bay Sailing Clubhouse and as part of the SIGN ON each skipper will be issued with a Vakaros Unit.
- 7.2 It is mandatory for ALL skippers to SIGN OFF each race day within 60 minutes of the last boat finishing. SIGN OFF will be in the Double Bay Sailing Clubhouse and will require the return of the Vakaros Unit to complete the SIGN OFF.

**8 THE START SEQUENCE**

8.1 The table in RRS 26 is changed as follows:

<i>Minutes before starting signal</i>	<i>Visual signal (flags)</i>	<i>Sound signal</i>	<i>Means</i>
5	5 x Red I, U, Black (if used)	One	Warning signal
4	4 x Red	One	Preparatory signal
3	3 x Red		
2	2 x Red		
1	1 x Red	One	
0	Red removed	One	Starting signal

**9 TIME LIMITS**

- 9.1 Boats shall start within ten minutes of the starting signal. Boats not starting within ten minutes of the starting signal will be scored Did Not Start (DNS) without a hearing. This changes RRS A4 and A5.1.
- 9.2 On days where one race is scheduled, the race time limit is three hours. On days where two races are scheduled, the race time limit is one hour.
- 9.3 The finishing window is the time for boats to finish after the first boat sails the course and finishes. The finishing window:
  - (a) for a race where only one race is scheduled is the greater of the race time limit, or one hour after the finishing time of the first boat; and
  - (b) for a race where more than one race is scheduled is 10 minutes after the finishing time of the first boat.
  - (c) Boats failing to finish within the finishing window, and not subsequently retiring, penalised or given redress, will be scored Time Limit Expired (TLE) without a hearing. A boat scored TLE shall be scored points for the finishing place one more than the points scored by the last boat that finished within the Finishing Window.

This SI 9.3 changes RRS 35, A5.1, A5.2 and A10.

**10 PROTEST TIME LIMIT**

- 10.1 The protest time limit shall be 60 minutes after the last boat has finished the last race of the day.

**11 PROHIBITED AREAS**

- 11.1 While racing, boats shall not sail:

- (a) within the area of water between the registered moorings and the adjacent shoreline. This includes Police or NSW Maritime moorings but excludes naval and shipping moorings;
- (b) within the area bounded by the cardinal marks around Sow and Pigs reef;
- (c) between the cardinal mark(s) nearby and the shore of Bradley's Head and Shark Island; and
- (d) within the area of water bounded by the Yellow special purpose buoys and the shore at Garden Island and Chowder Bay.

Note: Please refer to Notice of Race 1.4 regarding penalties for this SI.

- 11.2 The areas described in SI 11.1 are designated as obstructions.

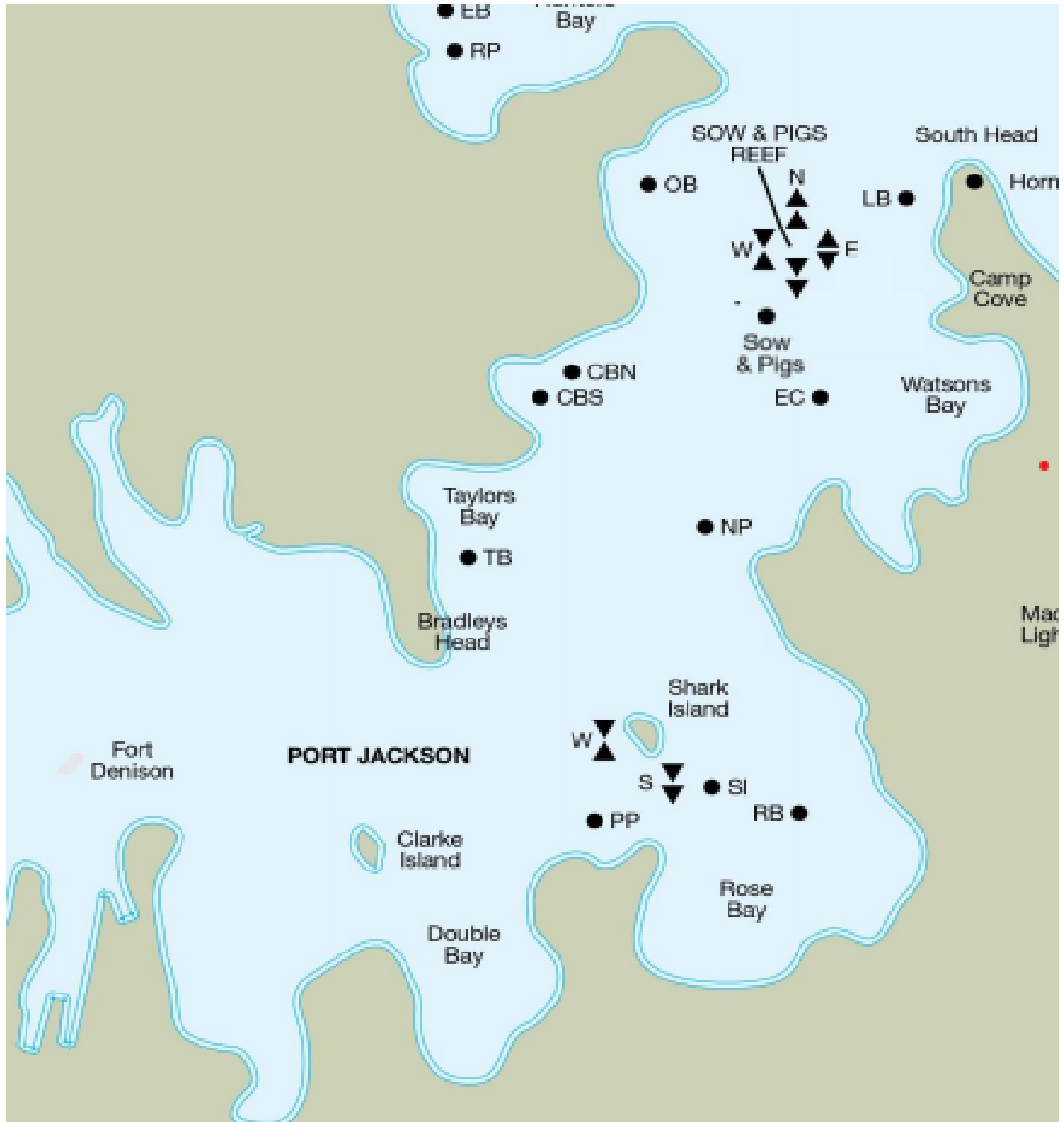
**12 COMMERCIAL AND DEFENCE SHIPPING**

- 12.1 Boats shall refer to Notice of Race 11 regarding Commercial and Defence Shipping

- 12.2 Boats are reminded of their obligations for reporting marine accidents under the Marine Safety Act 1998 and the Marine Safety (General) Regulations 2016. Details of these obligations can be found at [www.18footers.com.au/18-footers-sailing/documents/](http://www.18footers.com.au/18-footers-sailing/documents/) .

### 13 COURSES

- 'AS' marks are Australian Sailing yellow spherical, cylindrical or spar shaped buoy and can be replaced with a different mark without warning.
- 'LM' marks are temporarily laid orange inflatable cylindrical marks and may include an Australian 18 Footer League logo and/or sponsor's logo.
- In Course 6/2, Course 6/3 and Course 6/4, Mark 1 will be laid to windward of the start line. (Distance and bearing will be displayed from the Committee Vessel).
- Gate 2 will be laid approximately 50 metres to windward of the start line.
- If one of the gate marks is missing boats shall round the one existing mark to port.
- All marks are rounding marks.
- Start locations described for the courses are a guide only and may vary at the discretion of the Race Committee (RC).



<b>COURSE 1 - NORTH-EAST</b>		
Start		Starting line in vicinity of Clarke Island
Beashel Buoy - AS	to starboard	
Shark Island - AS	to starboard	
Clarke Island - LM	to starboard	
Beashel Buoy - AS	to starboard	
Clarke Island - LM	to starboard	

SAILING INSTRUCTIONS - 2025 - JJ GILTINAN 18 FOOT SKIFF CHAMPIONSHIP

Beashel Buoy - AS	to starboard	
Shark Island - AS	to starboard	
Finish		Finishing line in vicinity of Clarke Island

<b>COURSE 2 - EAST</b>		
Start		Starting line in vicinity of Robertson Point
Rose Bay - LM	to starboard	
Clarke Island - LM	to starboard	
Kurraba Point - LM	to starboard	
Rose Bay - LM	to starboard	
Kurraba Point - LM	to starboard	
Rose Bay - LM	to starboard	
Finish		Finishing line in vicinity of Clarke Island

<b>COURSE 3 - SOUTH-EAST</b>		
Start		Starting line in vicinity of Taylors Bay
Rose Bay - LM	to starboard	
Robertson Point - LM	to port	
Clarke Island - LM	to port	
Chowder Bay - LM	to starboard	
Rose Bay - LM	to starboard	
Taylors Bay - AS	to starboard	
Rose Bay - LM	to starboard	
Robertson Point - LM	to port	
Finish		Finishing line in vicinity of Clarke Island

<b>COURSE 4 - SOUTH</b>		
Start		Starting line in vicinity of Athol Bay
Clarke Island - LM	to port	
Obelisk Bay - AS	to starboard	

SAILING INSTRUCTIONS - 2025 - JJ GILTINAN 18 FOOT SKIFF CHAMPIONSHIP

Shark Island - AS	to starboard	
Athol Bay East - LM	to port	
Clarke Island - LM	to port	
Obelisk Bay - AS	to starboard	
Shark Island - AS	to starboard	
Athol Bay East - LM	to port	
Finish		Finishing line in vicinity of Clarke Island

<b>COURSE 4 / 2 – SOUTH (STORM)</b>		
Start		Starting line in vicinity of Athol Bay
Clarke Island - LM	to port	
Chowder Bay North - LM	to starboard	
Shark Island - AS	to starboard	
Athol Bay East - LM	to port	
Clarke Island - LM	to port	
Chowder Bay North - AS	to starboard	
Shark Island - AS	to starboard	
Athol Bay East - LM	to port	
Finish		Finishing line in vicinity of Clarke Island

<b>COURSE 5 - WEST</b>		
Start		Starting line in vicinity of Rose Bay
Kurraba Point - LM	to port	
Clarke Island - LM	to port	
Rose Bay - LM	to port	
Kurraba Point - LM	to port	
Rose Bay - LM	to port	
Kurraba Point - LM	to port	
Finish		Finishing line in vicinity of Clarke Island



<b>COURSE 6 / 2</b>		
Start		
Mark 1	to port	
Gate 2	Gate mark	
Mark 1	to port	
Finish		

<b>COURSE 6 / 3</b>		
Start		
Mark 1	to port	
Gate 2	Gate mark	
Mark 1	to port	
Gate 2	Gate mark	
Mark 1	to port	
Finish		

<b>COURSE 6 / 4</b>		
Start		
Mark 1	to port	
Gate 2	Gate mark	
Mark 1	to port	
Gate 2	Gate mark	
Mark 1	to port	
Gate 2		
Mark 1	to port	
Finish		

**14 RADIO COMMUNICATION**

- 14.1 All boats may carry a marine band VHF receiver capable of receiving and transmitting marine VHF channels. Boats can use the radio to report retirement from racing and may use the radio to request assistance in an emergency. No transmissions of any other nature are

permitted by competing boats during each racing day from the first warning signal until the end of the last race of the day.

14.2 The RC may use VHF channel 73 to advise competitors of race information.

## **15 VAKAROS RACESENSE**

15.1 Each boat shall have a working Vakaros Atlas 2 supplied by the OA and mounted on the aft side of the mast while racing.

15.2 The Vakaros Racesense system will not be utilised at the start by the Race Committee.

15.3 The Atlas 2 units will not be configured to display OCS.

15.4 Any data/information provided or failed to be provided by Racesense or Atlas 2 units shall not be admissible in a hearing nor shall it be grounds for redress. This changes RRS 61 and 63.4 (b)