



SAILING INSTRUCTIONS

2026

**JJ GILTINAN
18 FOOT SKIFF
CHAMPIONSHIP**

Organizing Authority:

The Australian 18 Footers League

1 RULES

1.1 The event is governed by the rules as defined in *The Racing Rules of Sailing*

and:

- (a) The Australian 18 Foot Class rules (found at <https://18footers.com/18-footer-racing/18-footer-rules/>)
- (b) RRS Appendix T – Arbitration applies. In this appendix the meeting may be conducted via electronic means (teleconference, video conference etc) and any requirement for written statement can be done electronically.

1.2 In the event of conflict between any of the rules and regulations, the Sailing Instructions will prevail. This changes RRS 63.5.C

1.3 RRS 31 is changed so that it only applies to

- (a) A race committee vessel that is also a mark
- (b) A boat that attaches to, or drags a mark
- (c) A MarkSetBot Start Line Pin Mark.

1.4 RRS 44.1 is changed as follows:

- (a) the Two-Turns Penalty is replaced by the One-Turn Penalty; and
- (b) a boat may take a penalty under RRS 44.1 if it breaks a rule of Part 2, RRS 31, or a Sailing Instruction regarding prohibited areas.

1.5 The definition of Zone is changed from three hull lengths to 30 meters. This amends the definition of *Zone*.

1.6 The Australian Sailing Discretionary Penalties are listed in Addendum J1 and J1-A and can be found on the Australian Sailing website.

Exclusively Band 4 Discretionary Penalties will be applied without a hearing. This changes RRS 63, Appendix A4 and Appendix A5.

A breach of any rule in this Addendum by a boat shall not be grounds for protest by another boat. This changes RRS 60.1.

1.7 A PFD (+50N) for each crew member to be on board or worn at the discretion of the crew member.

1.8 All boats shall carry a spare air cylinder (supplied by the OA) in addition each skiff shall carry a sheathed knife capable of cutting webbing and rope and it should be located in an accessible location

1.9 [DP] denotes a rule for which the penalty is at the discretion of the Protest Committee. This changes RRS 64.1.

1.10 [SP] denotes a rule for which a standard penalty will be applied by the race committee without a hearing. This changes RRS 63.1, Appendix A4 and Appendix A5. SPs for this event are listed in Addendum J1. A breach of any rule in this Addendum by a boat shall not be grounds for protest by another boat. This changes RRS 62.1(a).

1.11 [SP] Rigging areas shall be allocated by a random draw on 22 February 2026 the 18 Footers League Club. Skiffs shall remain in the drawn position for the duration of the

regatta. All skiffs shall be rigged and standing upright 45 minutes before the scheduled warning signal on any race day.

- 1.12 There is an international jury and right of appeal will be denied

2 CHANGES TO SAILING INSTRUCTIONS

- 2.1 Any change to the Sailing Instructions (SI) will be posted not less than two hours prior to the scheduled start time on the day it will take effect, except that any change to the schedule of races will be posted by 20:00 hours on the day before it will take effect.

3 SIGNALS MADE ASHORE

- 3.1 Signals made ashore will be displayed on the flag mast of the Double Bay Sailing Club.
- 3.2 When flag AP is displayed ashore, "1 minute" is replaced with "not less than 30 minutes", in Race Signals AP.

4 RIGGING AREA [SP] [NP]

- 4.1 Boats racing that day shall be fully rigged and standing in a vertical position 45 minutes prior to the first scheduled start time that day.
- 4.2 Boats shall launch from the rigging area between 45 minutes and 20 minutes prior to the first scheduled start time that day.

5 Outside Assistance

- 5.1 A boat shall not receive outside assistance in any form after they depart the rigging area until they return to the rigging area except where it is a matter of safety or at the discretion of the race committee.
- 5.2 A boat may receive spare boat components or sails at the discretion of the race committee whilst a boat is not actively racing.

6 THE START

- 6.1 The starting line will be between the mast of the Committee Vessel displaying a white rectangular flag with the Australian 18 Footers League logo, at the starboard end of the line and the mast displaying a white rectangular flag with the Australian 18 Footers League logo on the Pin End Boat or the course side of a white and black chequered Markset Bot at the port end of the line.

7 THE FINISH

7.1 Upwind Finish

The finish line will be between the mast of the Committee Vessel displaying a white rectangular flag with the Australian 18 Footers logo at the starboard end of the line and the course side of a white and black chequered inflatable buoy/Markset Bot at the port end of the line.

6.2 Downwind Finish

The finish line will be between the mast of the Committee Vessel displaying a white rectangular flag with the Australian 18 Footers logo at the port end of the line and the course side of a white and black chequered inflatable buoy/Markset Bot at the starboard end of the line.

8 SIGNING ON AND OFF [SP]

- 8.1 It is mandatory for ALL skippers to SIGN ON each race day at least 1 hour before the Warning Signal. The SIGN ON will be available in the Double Bay Sailing Clubhouse 2 hours before Warning Signal and shall be by collection of a Tracking Unit.
- 8.2 It is mandatory for ALL skippers to SIGN OFF each race day within 60 minutes of the last boat finishing (This shall be the Protest Time Limit as posted on the ONB). SIGN OFF will be in the Double Bay Sailing Clubhouse and will require the return of the Tracking Unit..
- 7.3 Tracking units shall be attached to the skiff whilst racing.

8 THE START SEQUENCE

- 8.1 The table in RRS 26 is changed as follows:

<i>Minutes before starting signal</i>	<i>Visual signal (flags)</i>	<i>Sound signal</i>	<i>Means</i>
5	5 x Red U, Black (if used)	One	Warning signal
4	4 x Red	One	Preparatory signal
3	3 x Red		
2	2 x Red		
1	1 x Red	One	
0	Red removed U, Black (if used)	One	Starting signal

9 TIME LIMITS

- 9.1 Boats shall start within ten minutes of the starting signal. Boats not starting within ten minutes of the starting signal will be scored Did Not Start (DNS) without a hearing. This changes RRS A4 and A5.1.
- 9.2 On days where one race is scheduled, the race time limit is 120 minutes.
On days where two races are scheduled, the race time limit is 90 minutes.
- 9.3 The finishing window is the time for boats to finish after the first boat sails the course and finishes. The finishing window:
- (a) for a race where only one race is scheduled is 45 minutes
 - (b) for a race where more than one race is scheduled is 20 minutes
 - (c) boats failing to finish within the finishing window, and not subsequently retiring, penalised or given redress, will be scored Time Limit Expired (TLE) without a hearing.

A boat scored TLE shall be scored points for the finishing place one more than the points scored by the last boat that finished within the Finishing Window. This changes RRS 35, A5.1, A5.2 and A10.

10 PROTEST TIME LIMIT

- 10.1 The protest time limit shall be 60 minutes after the last boat has finished the last race of the day and will be posted on the ONB

11 PROHIBITED AREAS

- 11.1 While racing, boats shall not sail:

- (a) within the area of water between the registered moorings and the adjacent shoreline. This includes Police or NSW Maritime moorings but excludes naval and shipping moorings;
- (b) within the area bounded by the cardinal marks around Sow and Pigs reef;
- (c) between the cardinal mark(s) nearby and the shore of Bradley's Head and Shark Island; and
- (d) within the area of water bounded by the Yellow special purpose buoys and the shore at Garden Island and Chowder Bay.

Note: Please refer to SI 1.4 regarding penalties.

- 11.2 The areas described in SI 11.1 are designated as obstructions.

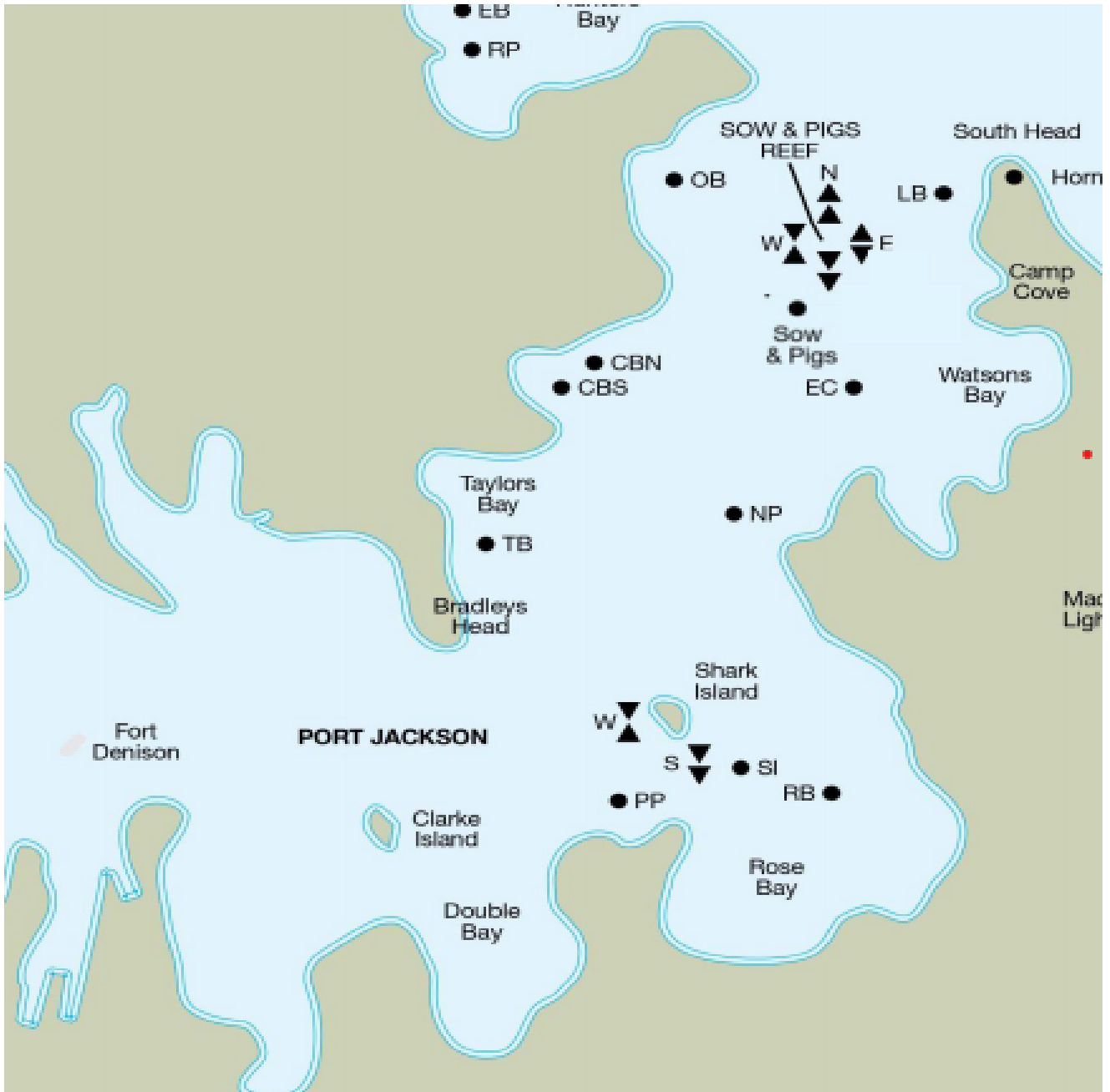
12 COMMERCIAL AND DEFENCE SHIPPING

- 12.1 Boats shall refer to Notice of Race 12 regarding Commercial and Defence Shipping
- 12.2 Boats are reminded of their obligations for reporting marine accidents under the Marine Safety Act 1998 and the Marine Safety (General) Regulations 2016. Details of these obligations can be found at <https://legislation.nsw.gov.au/>

13 COURSES

- 13.1 'AS' marks are Australian Sailing yellow spherical, cylindrical or spar shaped buoy and can be replaced with a different mark without warning.
- 13.2 'LM' marks are temporarily laid MarkSet Bot or an Orange inflatable cylinder which may include an Australian 18 Footer League logo and/or sponsor's logo.
- 13.3 In Course 6/2, Course 6/3 and Course 6/4, Mark 1 will be laid to windward of the start line. (Distance and bearing will be displayed from the Committee Vessel).
- 13.4 Gate 2 will be laid approximately 100 metres to windward of the start line.
- 13.5 If one of the gate marks is missing boats shall round the one existing mark to port.
- 13.6 All marks are rounding marks.

- 14 Start locations described for the courses are a guide only and may vary at the discretion of the Race Committee (RC).



COURSE 1 - NORTH-EAST		
Start		Starting line in vicinity of Clarke Island
Beashel Buoy - AS	to starboard	
Shark Island - AS	to starboard	
Clarke Island - LM	to starboard	
Beashel Buoy - AS	to starboard	

SAILING INSTRUCTIONS - 2026 - JJ GILTINAN 18 FOOT SKIFF CHAMPIONSHIP

Clarke Island - LM	to starboard	
Beashel Buoy - AS	to starboard	
Shark Island - AS	to starboard	
Finish		Finishing line in vicinity of Clarke Island

COURSE 2 - EAST		
Start		Starting line in vicinity of Robertson Point
Rose Bay - LM	to starboard	
Clarke Island - LM	to starboard	
Kurraba Point - LM	to starboard	
Rose Bay - LM	to starboard	
Kurraba Point - LM	to starboard	
Rose Bay - LM	to starboard	
Finish		Finishing line in vicinity of Clarke Island

COURSE 3 - SOUTH-EAST		
Start		Starting line in vicinity of Taylors Bay
Rose Bay - LM	to starboard	
Robertson Point - LM	to port	
Clarke Island - LM	to port	
Chowder Bay - LM	to starboard	
Rose Bay - LM	to starboard	
Taylors Bay - AS	to starboard	
Rose Bay - LM	to starboard	
Robertson Point - LM	to port	
Finish		Finishing line in vicinity of Clarke Island

COURSE 4 - SOUTH		
Start		Starting line in vicinity of Athol Bay
Clarke Island - LM	to port	

SAILING INSTRUCTIONS - 2026 - JJ GILTINAN 18 FOOT SKIFF CHAMPIONSHIP

Obelisk Bay - AS	to starboard	
Shark Island - AS	to starboard	
Athol Bay East - LM	to port	
Clarke Island - LM	to port	
Obelisk Bay - AS	to starboard	
Shark Island - AS	to starboard	
Athol Bay East - LM	to port	
Finish		Finishing line in vicinity of Clarke Island

COURSE 4 / 2 – SOUTH (STORM)		
Start		Starting line in vicinity of Athol Bay
Clarke Island - LM	to port	
Chowder Bay North - LM	to starboard	
Shark Island - AS	to starboard	
Athol Bay East - LM	to port	
Clarke Island - LM	to port	
Chowder Bay North - LM	to starboard	
Shark Island - AS	to starboard	
Athol Bay East - LM	to port	
Finish		Finishing line in vicinity of Clarke Island

COURSE 5 - WEST		
Start		Starting line in vicinity of Rose Bay
Kurraba Point - LM	to port	
Clarke Island - LM	to port	
Rose Bay - LM	to port	
Kurraba Point - LM	to port	
Rose Bay - LM	to port	
Kurraba Point - LM	to port	
Finish		Finishing line in vicinity of Clarke Island

COURSE 6 / 2		
Start		
Mark 1	to port	
Gate 2	Gate mark	
Mark 1	to port	
Finish		

COURSE 6 / 3		
Start		
Mark 1	to port	
Gate 2	Gate mark	
Mark 1	to port	
Gate 2	Gate mark	
Mark 1	to port	
Finish		

COURSE 6 / 4		
Start		
Mark 1	to port	
Gate 2	Gate mark	
Mark 1	to port	
Gate 2	Gate mark	
Mark 1	to port	
Gate 2		
Mark 1	to port	
Finish		

15 RADIO COMMUNICATION

15.1 All boats may carry a marine band VHF receiver capable of receiving and transmitting marine VHF channels. Boats can use the radio to report retirement from racing and may use

the radio to request assistance in an emergency. No transmissions of any other nature are permitted by competing boats during each racing day from the first warning signal until the end of the last race of the day.

- 15.2 The RC may use VHF channel 73 to advise competitors of race information.

16 RISK STATEMENT

It is a fundamental condition of entry that all those taking part in the regatta do so at their own risk and responsibility and that they hold harmless and indemnify the Australian 18 Footers League Limited and Australian Sailing, its officers, employees, agents and members and the sponsors of the event from all liability any of those persons has to any crew member on the boat, or to any person claiming through or under any such person arising from loss or damage howsoever caused, including by negligent act or omission, arising out of or relating to participation in the event.

The Australian 18 Footers League Limited is not responsible for the seaworthiness of a skiff whose entry is accepted or the sufficiency or adequacy of its equipment. The Australian 18 Footers League Limited reserves the right to refuse an entry.

Attention is drawn to RRS 3 which states: “The responsibility for a boat’s decision to participate in a race or to continue racing is hers alone”.